

FED DIST NO.	STATE	FED AID PROJ. NO.	FISCAL YEAR	SHEET NO.	TOTAL SHEETS
6	APK.	295-B		1	5

STATE OF ARKANSAS
STATE HIGHWAY COMMISSION

PLAN OF PROPOSED BRIDGE
OVER
MARTIN CREEK
MAMMOTH SPRING-LAWRENCE COUNTY LINE ROAD
SHARP COUNTY
ROUTE 63 SEC. 2
JOB No 504

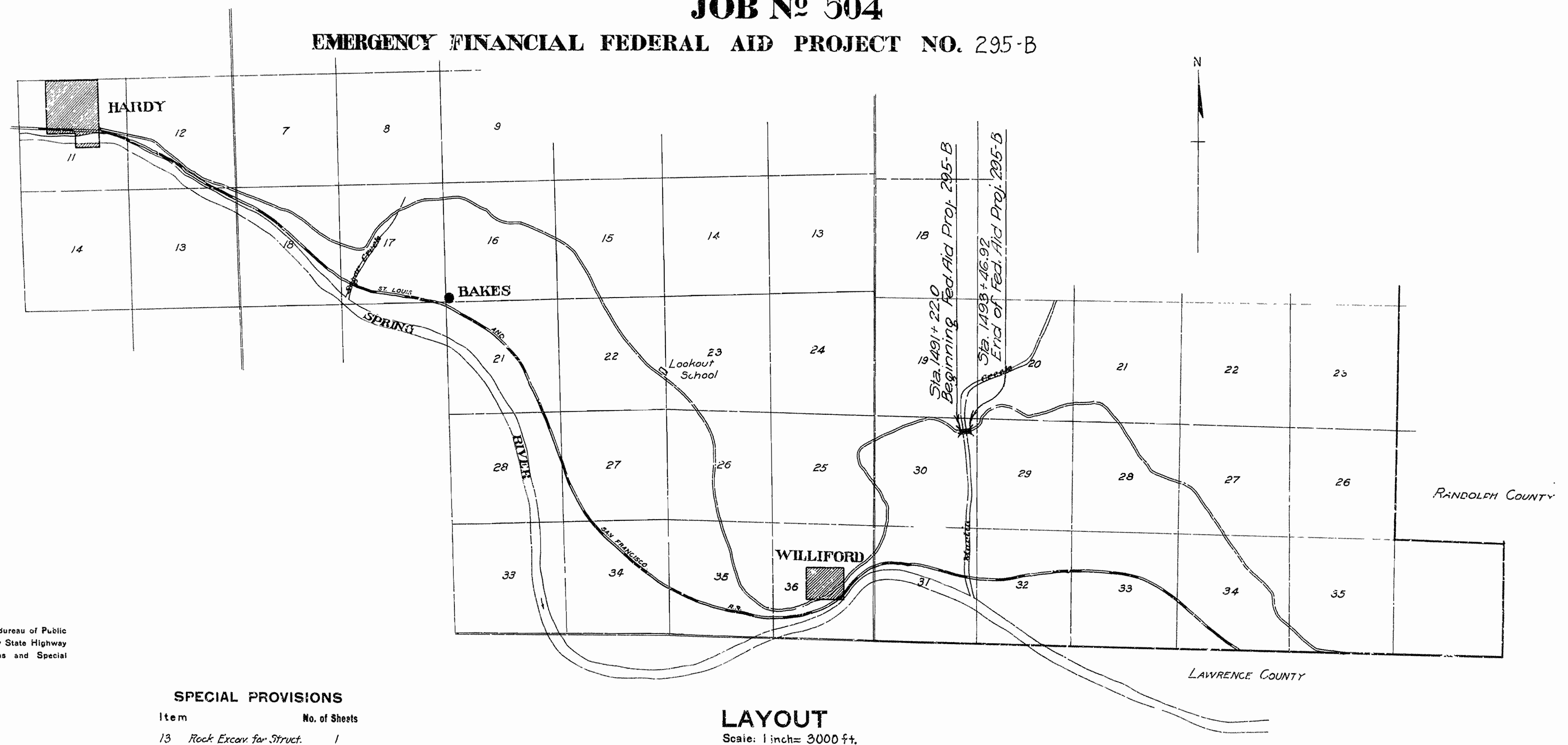
INDEX OF SHEETS

Sheet No	Drwg. No.	Title Sheet
" 1	" 344-A	Title Sheet
" 2	" 344-B	Layout
" 3	" 345	Details of Abutment
" 4	" 346	Details of Approach Spans & Pier
" 5	" 113	Details of Standard 120'-0" Steel Truss

QUANTITIES

Item No.	Description	Quantity	Unit
13	Dry Excavation for Struct.	270	cu. yd.
" 13	Wet " " "	69	" "
" 13	Rock " " "	62	" "
" 54	Class "A" Concrete	230.53	" "
" 54	Class "S" " "	132.24	" "
" 55	Reinforcing Steel	56,646	lb.
" 56	Structural Steel	121,221	lb.
" 69	Rip Rap -1' thick	395	sq. yd.
" 74	Concrete Railing for Str.	210.5	lin. ft.

EMERGENCY FINANCIAL FEDERAL AID PROJECT NO. 295-B



LAYOUT

Scale: 1 inch = 3000 ft.

GROSS LENGTH OF PROJECT	=	224'-11" = 0.042 mi.
NET LENGTH OF BRIDGE	=	224'-11" = 0.042 mi.

Specifications approved by Chief, Bureau of Public Roads, September 28, 1925, and adopted by State Highway Commission May 30, 1925 with revisions and Special Provisions as follows:

REVISIONS

Paroniet A

SPECIAL PROVISIONS

Item	No. of Sheets
13 Rock Excav. for Struct.	1

- I
- J
- K
- L

APPROVED [Signature]

APPROVED [Signature]

APPROVED [Signature]

APPROVED [Signature]

APPROVED [Signature]

APPROVED [Signature]

N.B. Sawyer
BRIDGE ENGINEER

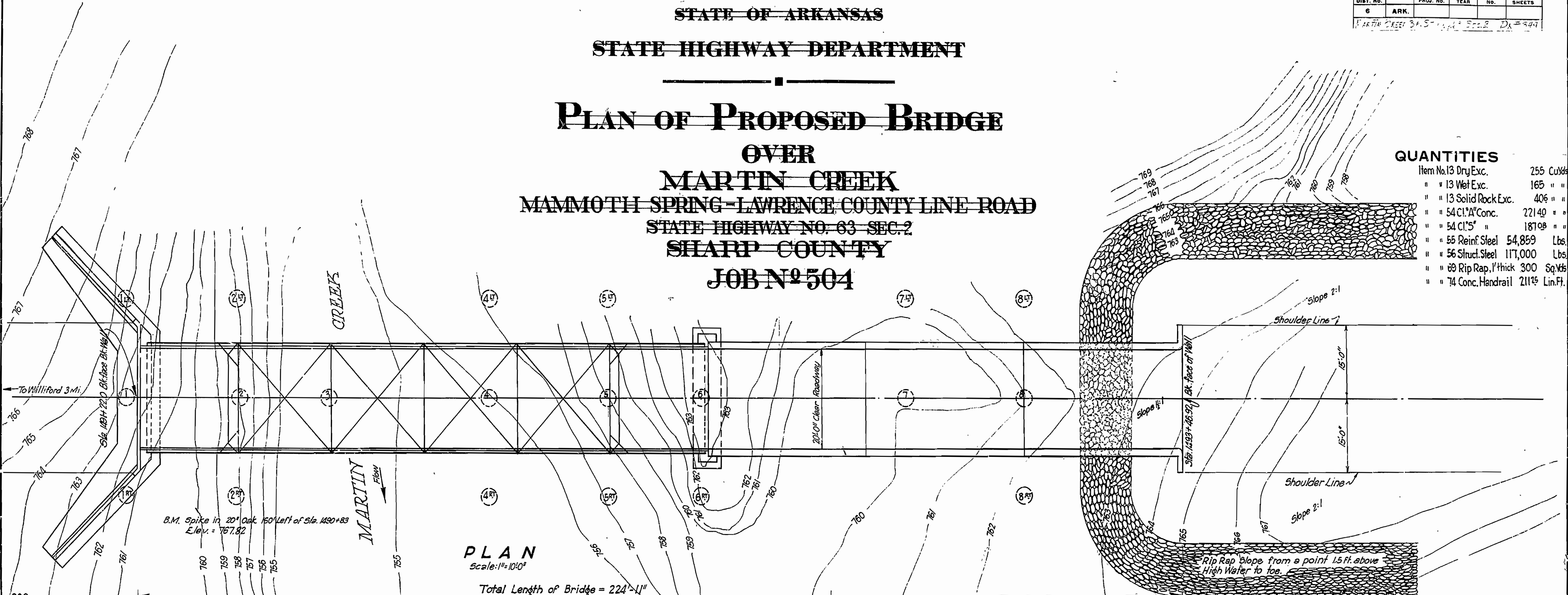
BRIDGES No. 359.

DRAWING No. 344-A

FED. ROAD DIST. NO.	STATE	PROJ. NO.	FISCAL YEAR	SHEET NO.	TOTAL SHEETS
6	ARK.				

STATE OF ARKANSAS
STATE HIGHWAY DEPARTMENT

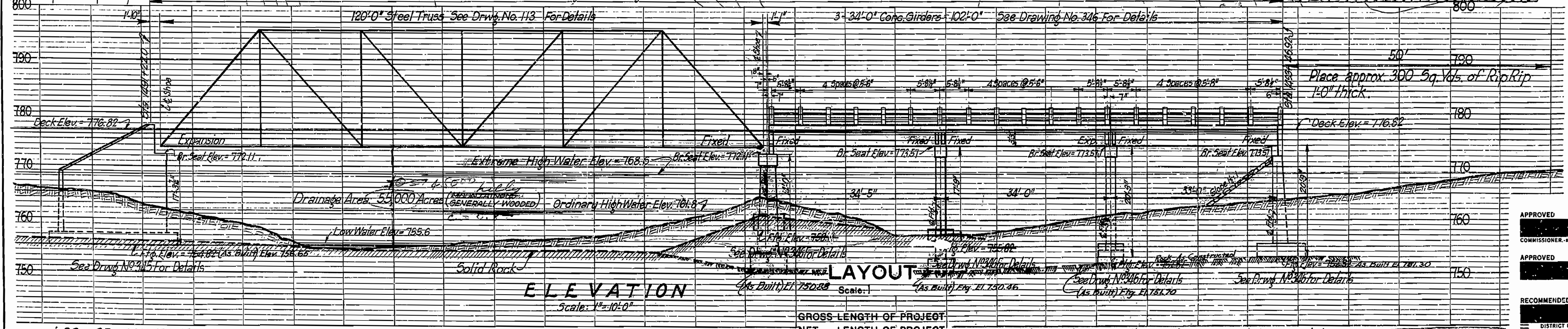
PLAN OF PROPOSED BRIDGE
OVER
MARTIN CREEK
MAMMOTH SPRING-LAWRENCE COUNTY LINE ROAD
STATE HIGHWAY NO. 63 SEC. 2
SHARP COUNTY
JOB NO. 504



QUANTITIES

Item No. 13 Dry Exc.	255 Cu Yds
" " 13 Wet Exc.	165 " "
" " 13 Solid Rock Exc.	406 " "
" " 54 Cl. "A" Conc.	22140 " "
" " 54 Cl. "S" "	18108 " "
" " 55 Reinf. Steel	54,859 Lbs.
" " 56 Struct. Steel	117,000 Lbs.
" " 69 Rip Rap, 1' thick	300 Sq Yds
" " 74 Conc. Handrail	211' Lin. Ft.

PLAN
Scale: 1"=10'0"
Total Length of Bridge = 224'-11"



ELEVATION
Scale: 1"=10'-0"

LAYOUT
Scale: 1"=10'-0"
GROSS LENGTH OF PROJECT
NET LENGTH OF PROJECT

LOG OF SOUNDINGS

Hole No.	20' Lt.	4'	20' Rt.	Station
1	760.12 Solid Rock	755.8 S.R.	758.1 S.R.	1491+19
2	755.4 S.R.	755.0 S.R.	754.6 S.R.	1491+43
3		754.2 S.R.		1491+63
4	754.6 S.R.	754.0 S.R.	755.2 S.R.	1491+06
5	752.8 S.R.	753.6 S.R.	754.9 S.R.	1491+24
6	755.5 S.R.	760.5 S.R.	761.3 S.R.	1492+45
7		756.6 S.R.	758.9 S.C. #9	1492+89
8	755.1 S.C. #9	752.8 S.C. #9		1492+84

GENERAL NOTES: All exposed corners to have 3/4" chamfer unless otherwise noted. Precast Concrete Handrails to be 1:3 Mix. Max. Agg. 1" Rail Posts to be Class 3 concrete. Reinforcing Steel to be deformed bars of structural intermediate grade. Shop List and Bending Diagrams must be submitted by contractor before fabrication is begun. Roadway Drains and Expansion Devices to be paid for as Reinforcing Steel. All Concrete above top of Column Caps, except Handrail, to be Class "S". All Concrete below top of Column Caps to be Class "A" Concrete. Concrete to be deposited in the dry. Specifications: Arkansas Standard Road and Bridge Specifications adopted May 30th, 1925.

Revised: Substructure, Rock Line - As Built, Dimensions A, B, C, D, E, F, G, H, I, J, K, L, M, N, O, P, Q, R, S, T, U, V, W, X, Y, Z.

M. Blanner
BRIDGE ENGINEER.

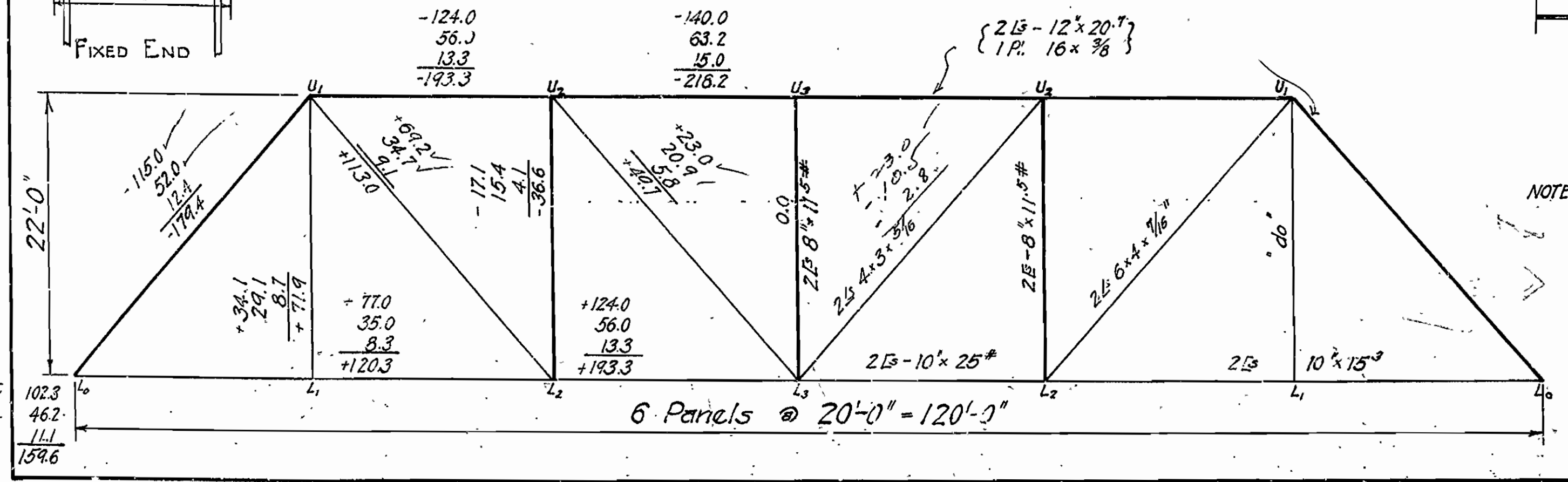
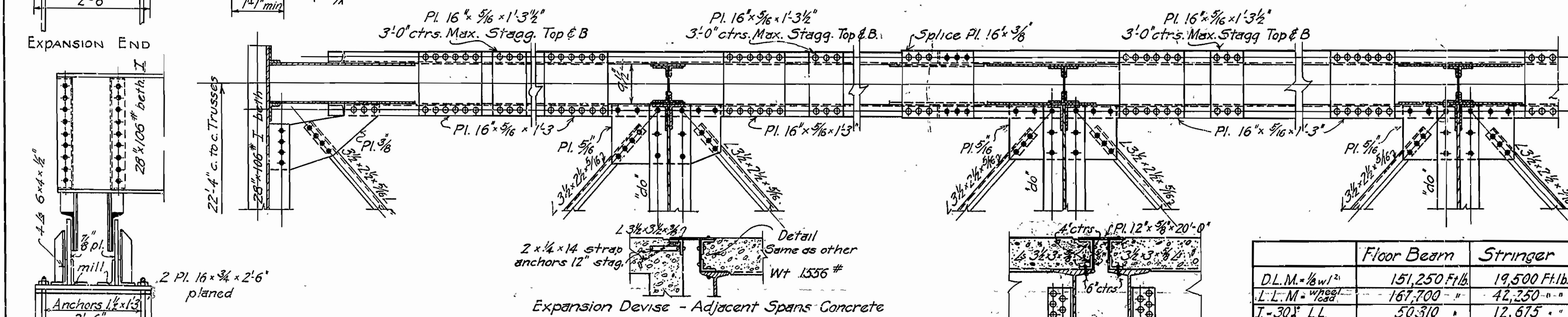
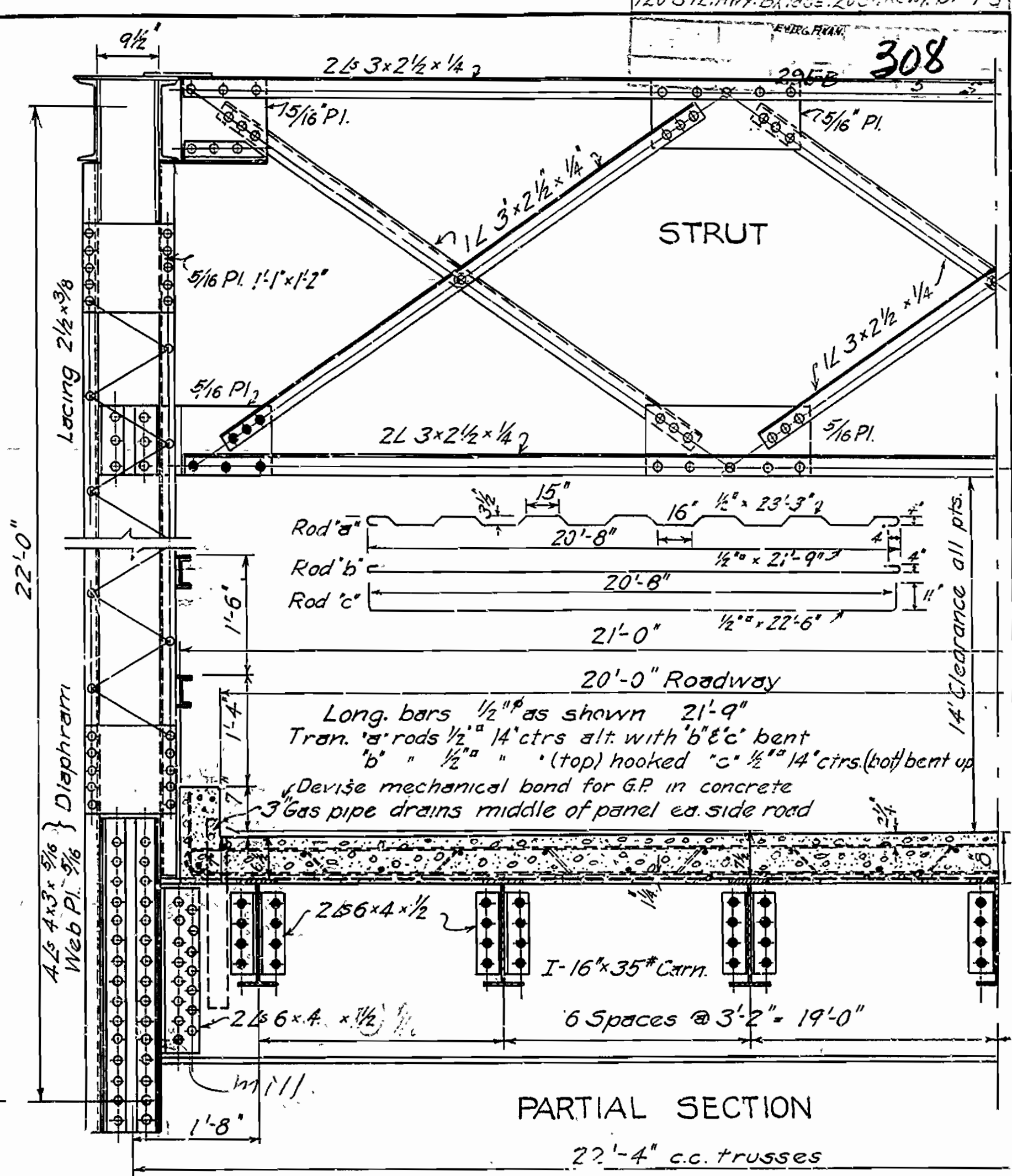
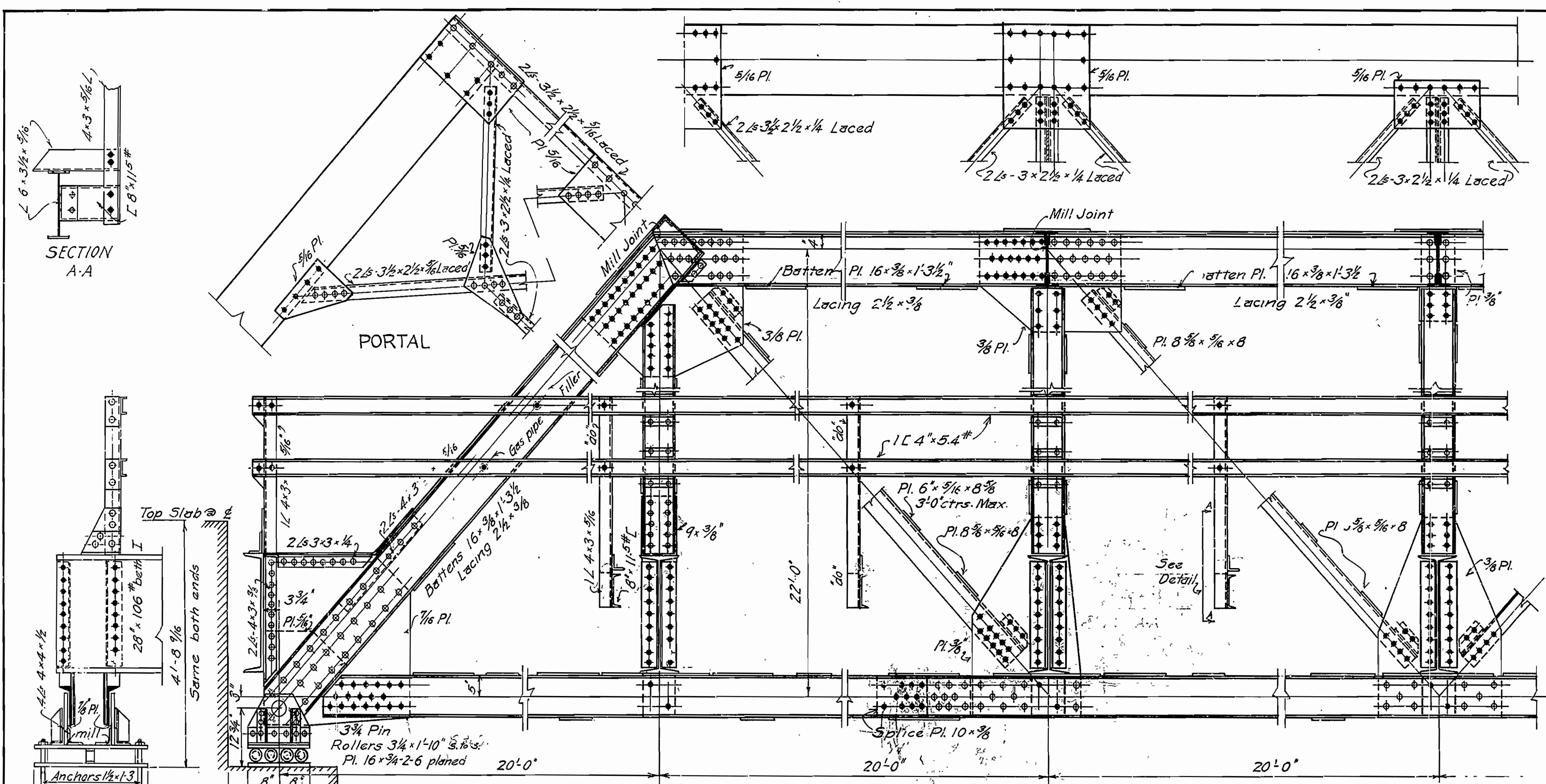
APPROVED
COMMISSIONER, STATE LANDS, HIGHWAYS AND IMPROVEMENTS

APPROVED
STATE HIGHWAY ENGINEER

RECOMMENDED FOR APPROVAL
DISTRICT ENGINEER - U. S. BUREAU OF PUBLIC ROADS

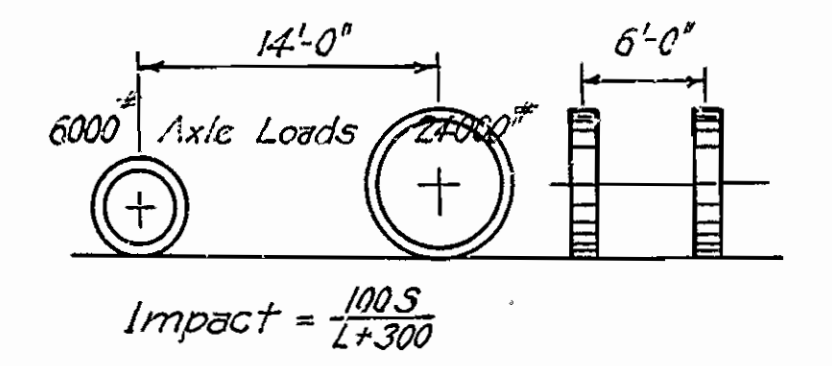
RECOMMENDED FOR APPROVAL
CHIEF ENGINEER - U. S. BUREAU OF PUBLIC ROADS

APPROVED
DIRECTOR - U. S. BUREAU OF PUBLIC ROADS



SPECIFICATIONS

Live Load: Uniform - 76 lbs per square foot of roadway
 Concentrated - 2-15 Ton Trucks as shown.



Unit Stresses:- See Arkansas Highway Department Specif. 5/30/25
 Rivets:- 3/4" diam.
 Open Holes:- Rivet holes in main members punch 3/8" smaller than rivet. During shop assembly ream to 1/8" larger than rivet specified.
 All field connections riveted-Rivet holes in tension members are to be so spaced that not more than one hole is deducted from area of cross-section of each angle at point of maximum stress
 Shop Paint:- One coat red lead & raw linseed oil
 Field Paint:- Two coats of different colors as approved by the engineer.
 Batten plates:- Spaced not over 3'-0" centers on tension members.
 Concrete:- Floor slab 'Class S'. 1" extra has been added for wear.

	Floor Beam	Stringer
D.L.M. = 1/2 w ²	151,250 Ft.lb	19,500 Ft.lb
L.L.M. = w ² / 8	167,700 "	42,350 "
I = 30 I _{LL}	50,310 "	12,675 "
Total M	370,000 "	74,425 "
Sec. Mod. - Rad	277.5	55.7
Beam Used	28 x 106 # both	16 x 35 # carn.
Irs Sec. Mod.	286.7	54.7

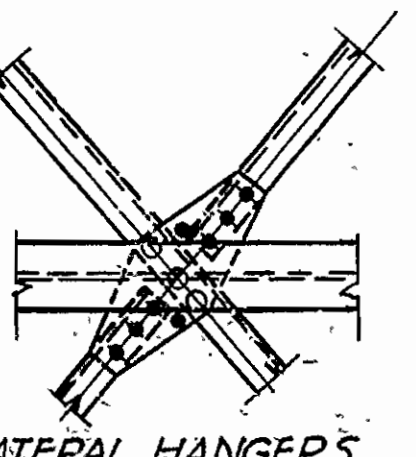
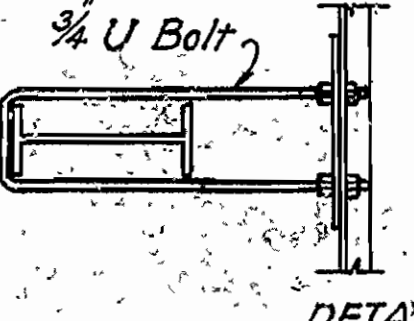
Estimate of Quantities	
Rein. Steel	79,301 lb
Cl. 5 Concrete (12" x 6")	61,2 yd
Str. Steel	121,221 lb

STANDARD PLAN
120'-0" STEEL HIGHWAY BRIDGE
 Concrete Floor 20' Roadway
 ARKANSAS HIGHWAY DEPARTMENT
 LITTLE ROCK

M.B. Garner
 Bridge Engineer

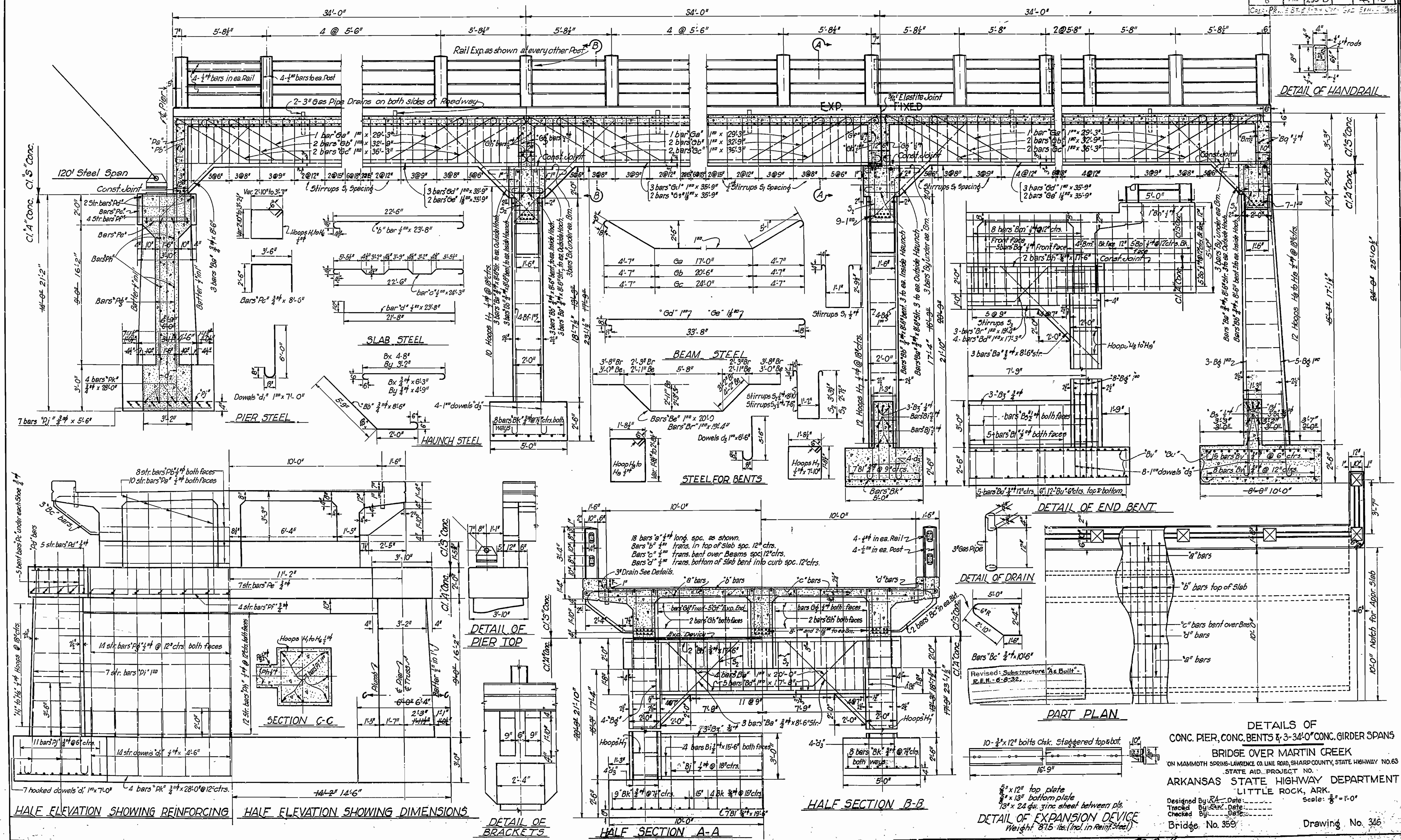
Drawing No 113

NOTE: This drawing is general shop drawings must be submitted for approval



OK For 60 Tons

STATE	PROJ. NO.	SHEET NO.	TOTAL SHEETS
ARK.	295-B	4	5
CONTRACT NO.		DATE	



DETAILS OF
 CONC. PIER, CONC. BENTS & 3-34'-0" CONC. GIRDER SPANS
 BRIDGE OVER MARTIN CREEK
 ON MAMMOTH SPRING-LAWRENCE CO. LINE ROAD, SHARP COUNTY, STATE HIGHWAY NO. 63
 STATE AID PROJECT NO.
 ARKANSAS STATE HIGHWAY DEPARTMENT
 LITTLE ROCK, ARK.
 Scale: 3/8" = 1'-0"

Designed By: R.A. - Date: _____
 Traced By: R.M.C. - Date: _____
 Checked By: _____ Date: _____
 Bridge No. 359 Drawing No. 316

T.B. Weaver
 BRIDGE ENGINEER O.K. For 60 Ton. Tank